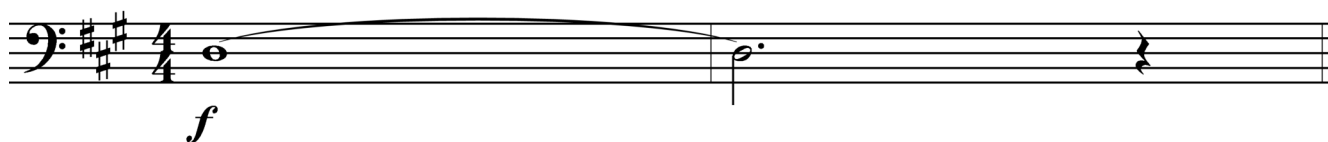


Summer 2025 Unit 1.2

1.



The note on the staff above is held for how many beats?

- (A) 4
- (B) 5
- (C) 6
- (D) 7

The following question is based on the excerpt below.

Musical score excerpt for Voice and Piano. The Voice part is in treble clef with a key signature of two sharps (F# and C#) and a common time signature (C). The Piano part is in bass clef with a key signature of two sharps (F# and C#) and a common time signature (C). The Voice part has lyrics: "-ser la tête; Ce-pen-dant que mon front, au Cau-ca-se pa-reil, Non con-". The Piano part has a forte (*f*) dynamic. Box A is a dashed box around the notes "la tête" in the Voice part. Box B is a dashed box around the notes "Ce-pen-dant que" in the Voice part.

2. The rhythmic value of the notes in box A is a total of

- (A) one and a half beats
- (B) two beats
- (C) three beats
- (D) four beats

Summer 2025 Unit 1.2

The following question is based on the excerpt below, which is for soprano and piano.

Andante

Andante

p legato

a piacere

p

Oh, pa - tria

mia, mai più, mai più_ ti ri ve - drò!

Summer 2025 Unit 1.2

3. In measure 6, the duration of the first note is
- (A) a quarter of a beat
 - (B) half a beat
 - (C) three-quarters of a beat
 - (D) a whole beat
-